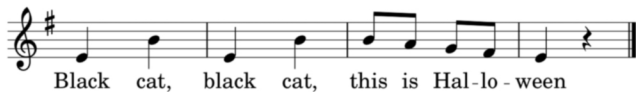


# Black Cat, Black Cat



## Game

### Movement Ideas:

Line one: pantomime cat whiskers, then put a hand up above eyes, as if "looking" for a witch.

Line two: Pantomime cat whiskers, then put both hands up to block eyes to show the "dark".

Line three: Put hands up in circles around eyes, to show the big eyes of the cat.

Line four: Pantomime cat whiskers, smile and nod on "this is Halloween".

### Game:

(Game Type: hot/cold) All friends sit together, and decide who will be the cat and who will be the witch. The witch leaves the room or covers their eyes. The cat either hides themselves, or a stuffed animal cat, or a picture of a cat somewhere in the room.

Sing the song, singing stronger as the witch gets closer to the cat, or weaker if the witch is farther from the cat. Remember to never allow yell-singing! Repeat the song until the cat has been found.

Bonus spooky points for playing the game in the dark!